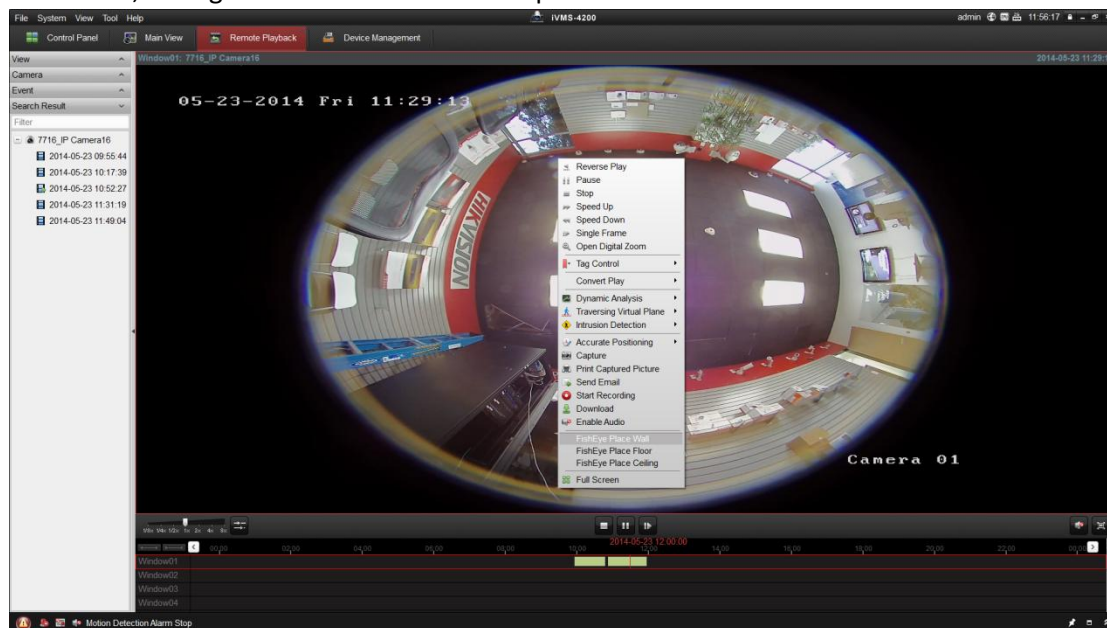


iVMS-4200 Windows Client Software Release Notes

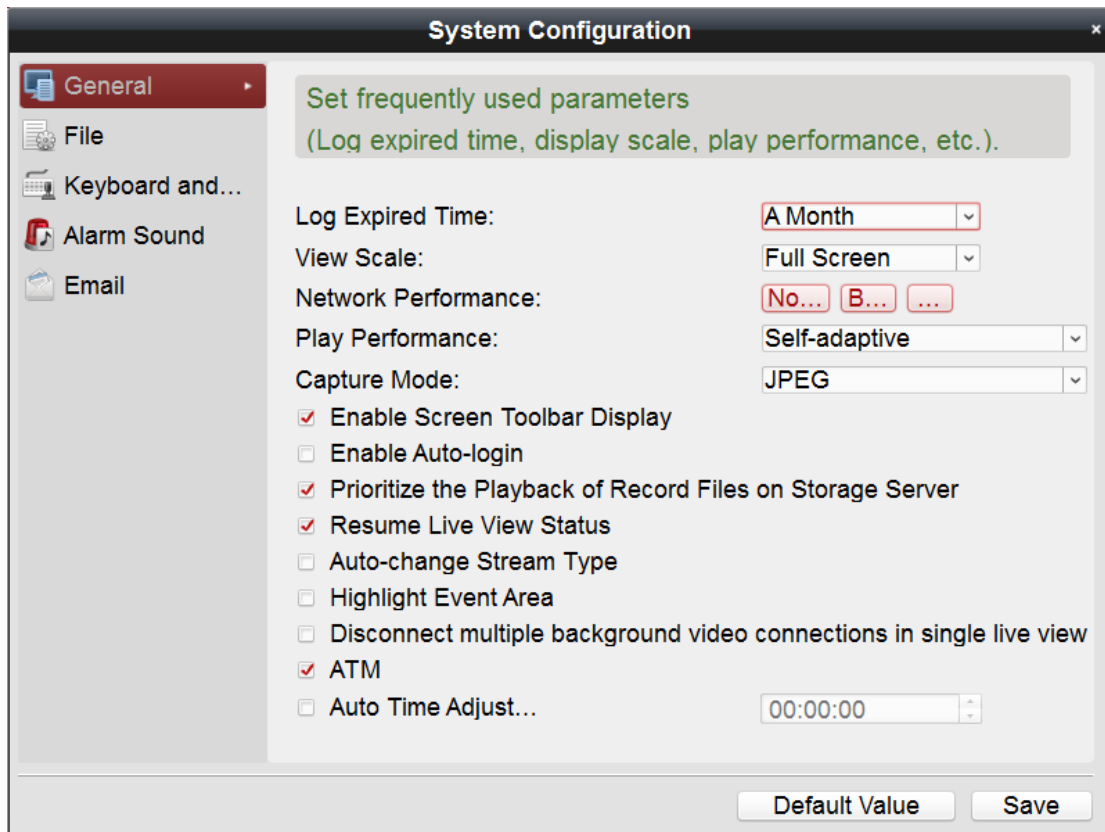
Software version: V2.00.08.50 build20140519_02

Software updates

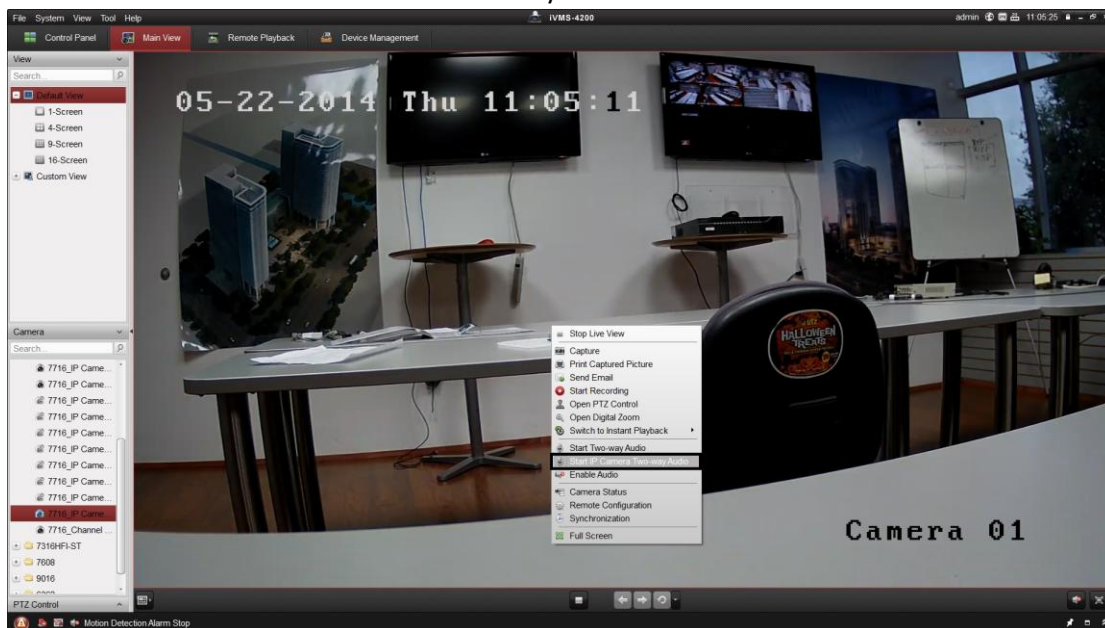
1. Compatible to Netra v3.1.0 USA GUI firmware.
2. Support fisheye camera DS-2CD62xx connecting with Netra NVR.
3. Support de-warping fisheye camera records in playback. Playback de-warp has wall mount, ceiling mount and table mount options.



4. In multiple-channel live view, support automatically connecting to main stream when sub stream is disconnected.
5. In multiple-channel live view, support disconnecting sub stream when switching to single-channel live view and reconnecting to the previous sub stream when switching back to multiple-channel live view. Default setting is disabled.



6. iVMS-4200 client software can do two way audio with internal IP camera via NVR.



Resolved issues

1. Fixed the incompatibility of user rights between Windows client and Mac client.
2. Fixed the time zone problem regarding the Instant Playback and Remote Playback.